

## Student Information Packet

Hello 2025 Silicon Valley Women in Engineering Conference Participants,

The Charles W. Davidson College of Engineering at San José State University (SJSU) is proud to bring to you the [2025 Silicon Valley Women in Engineering Conference](#), “**Engineering a New Era of Possibilities**,” Saturday, March 15, 2025, 7:30 am - 7:00 pm PDT. Nearly 100 industry professionals and San José State University professors will be participating to share with you their technical expertise and career insights. Many of our event sponsors including Google, IBM, KLA, Marvell, Kiewit, Applied Materials, and Lockheed Martin will showcase their innovations and connect with you during the Innovation Showcase and Networking Reception from 5 to 7 pm.

There will be prize drawings during the morning keynotes and at the conclusion of the conference. You must be present to win. You won't want to miss the first drawing of (2) **\$500 book scholarships** immediately following the morning keynotes. Please drop off your raffle ticket by 8:25 am to qualify.

Please **arrive early** to secure your seat, enjoy a delicious breakfast, and engage with fellow students from all throughout California. Please **have your Eventbrite ticket ready** to show at Registration to speed up the check-in process. The opening address **starts on time** and **latecomers will not be allowed** to attend the keynotes.

To maximize your experience from the conference, we suggest you to:

1. Arrive early, [prepay](#) your parking before the conference to avoid lines and hassles, and have your Eventbrite ticket handy at Registration.
2. **IMPORTANT**, the [San Jose Shamrock Run](#) is taking place the morning of Saturday, March 15th in Downtown San Jose. Some roads leading to the San Jose State University Campus will be closed. Please check traffic conditions and plan your route to the campus accordingly.
3. Visit the conference [website](#) for up-to-date information and map out your personalized conference schedule prior to the conference.

If you have any questions, please email us at [WiE-Engineering@SJSU.edu](mailto:WiE-Engineering@SJSU.edu). See you on March 15th!

2025 SV WIE Conference Team

## Table of contents:

- [Conference at a Glance](#)
- [Connect With Us on Social Media](#)
- [Important Information](#)
  - [Check-In](#)
  - [Parking](#)
  - [Dress Code](#)
- [Campus Map](#)
- [Floor Maps](#)

# CONFERENCE AT A GLANCE

[Return to Table of Contents](#)

## 2025 Silicon Valley Women in Engineering Conference Schedule

7:30 - 8:30 am	<b>Conference Registration and Continental Breakfast</b> Ballroom Foyer/Ballroom A/B/C					
8:30 - 9:30 am	<b>Welcome and Opening Keynotes</b> <b>What Can Engineers Do to Slow Down and Stop Climate Change?</b> - Sally M. Benson, <i>Precourt Family Professor for Energy Science and Engineering, Stanford University</i> <b>New Possibilities in the Era of AI</b> - Ya Xu, <i>VP of Research, Google DeepMind</i> Ballroom A/B/C					
9:30 - 9:45 am	Break					
Tracks	Emerging Technologies				Professional Development	
	Responsible Engineering	Cutting-Edge Technologies	Human-Centered Technology	Sustainable Future	Career Launch I	Career Launch II
Concurrent Sessions	<b>Cybersecurity</b> Chairs: Young Park, Xiao Su Meeting Room: 1A	<b>Under the Hood of ChatGPT</b> Chair: Birsen Sirkeci Meeting Room: 3	<b>Human-Centered Robotics and Automation</b> Chairs: Behin Elahi, Yue Luo Meeting Room: 4A	<b>Future Energy Systems</b> Chairs: Ayca Erdogan, Hongrui Liu Meeting Room: 1B	<b>Job and Internship Search</b> Speaker: Kelly Masegian Meeting Room: 2	<b>Professional Branding</b> Chair: Bobbi Makani Meeting Room: 4B
9:45 - 10:45 am	Break					
10:45 - 11:00 am	Break					
Concurrent Sessions	<b>New Possibilities for AI</b> Chairs: Jorjeta Jetcheva, Yunjian (Jo Jo) Qiu Meeting Room: 3	<b>Semiconductors</b> Chair: Lili He Meeting Room: 1A	<b>Biomedical Robots and AI in Healthcare</b> Chairs: Winncy Du, Lin Jiang Meeting Room: 4A	<b>Revolutionizing Mobility: Telecom and Urban Transport</b> Chairs: Riti Gour, Sravani Vadlamani Meeting Room: 1B	<b>Employer Perspective: Top Tips on Job and Internship Success</b> Chair: Kelly Masegian Meeting Room: 2	<b>Using Generative AI to Enhance Resumes</b> Chair: Bobbi Makani Meeting Room: 4B
11:00 am - 12:00 pm	Break					
12:00 - 12:45 pm	<b>Lunch</b> Ballroom A/B/C					
12:45 - 1:15 pm	<b>Lunch Keynote</b> <b>Engineering a New Era of Chips</b> - Rose Castanares, <i>President, TSMC (Taiwan Semiconductor Manufacturing Company), Arizona</i> Ballroom A/B/C					
1:15 - 1:45 pm	Roundtable Discussions					
1:45 - 2:00 pm	Break					
Concurrent Sessions	<b>Responsible AI</b> Chairs: Melody Moh, Mahima Agumbe Suresh Meeting Room: 2	<b>Autonomous Vehicles (Cars/Drones)</b> Chairs: Yuwei He, Wencen Wu Meeting Room: 3	<b>AI-Enabled Biotech</b> Chair: Yun Wang Meeting Room: 1A	<b>Water and Climate</b> Chair: Olivia Yip Meeting Room: 1B	<b>Launching Your Career: The Pitch That Sets You Apart</b> Chair: Katy Kao Meeting Room: 4A	<b>Own the Interview: Confidently Navigate Your Tech Career</b> Chair: Bobbi Makani Meeting Room: 4B
2:00 - 3:00 pm	Break					
3:00 - 3:15 pm	Break					
Career Panels	Engineering Career Panels					
	<b>Software and Information Technology</b> Chair: Xiao Su Meeting Room: 2	<b>Semiconductor and Electronics</b> Chair: Nicole Okamoto Meeting Room: 4B	<b>Biomedical and Biotech</b> Chair: Katy Kao Meeting Room: 4A	<b>Aerospace and Aeronautics</b> Chairs: Maria Chierichetti, Tina Panontin Meeting Room: 1A	<b>Building, Infrastructure, and the Environment</b> Chairs: Thalia Anagnos, Olivia Yip Meeting Room: 1B	
3:15 - 4:45 pm	Break					
4:45 - 5:00 pm	Break					
5:00 - 7:00 pm	Innovation Showcase, Networking Reception, and Prize Drawing Ballroom C and Ballroom Foyer					


#SVWIE2025


## CONNECT WITH US ON SOCIAL MEDIA


[Return to Contents Page](#)


### Connect with us on Social Media! **#SVWiE2025**

In addition to visiting [our website](#), please connect with us on:

 [Facebook](#), we welcome your posts as we build anticipation.  
Join our [Facebook event](#) for the conference.

 Feel free to share and post to [our X \(formerly Twitter\) feed](#).

 [Instagram](#), don't forget to post on conference day.

 [LinkedIn](#), connect to speakers and attendees!  
Join our [LinkedIn event](#) for the conference.

Make sure, to use the hashtag: **#SVWiE2025** in all of your posts.

Thank you, and we look forward to building community and excitement with you.

**#SVWiE2025**

# IMPORTANT INFORMATION

[Return to Table of Contents](#)

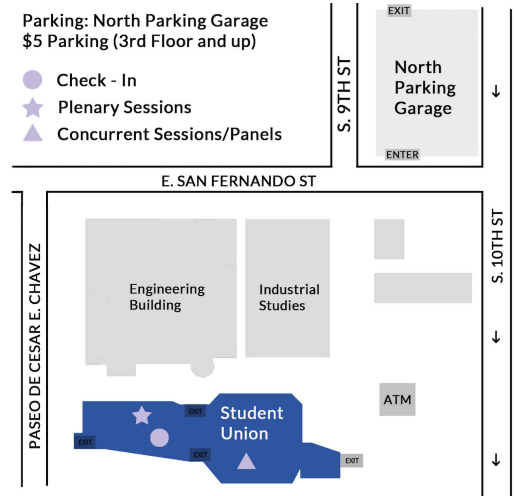
## Participant Check-In/Information Table:

Location:  Student Union Ballroom Foyer, 2nd floor ([Campus Map](#))

Check-in Time: 7:30 AM - 8:15 AM

Please **have your Eventbrite ticket ready** to show at Registration to speed up the check-in process.

**The opening address starts on time so please arrive early to secure your seat. Latecomers will not be allowed to attend the keynotes.**



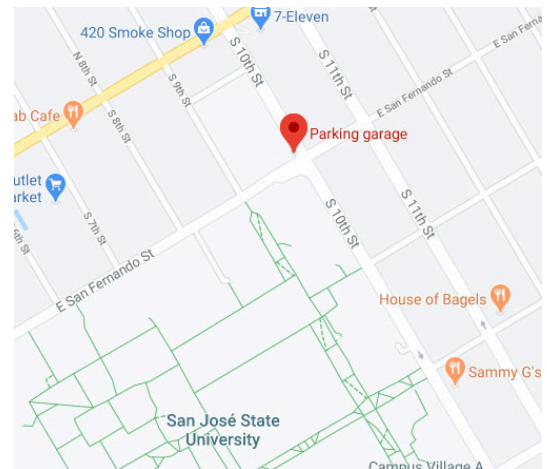
## DRIVING DIRECTIONS:

**Location: North Parking Garage**

[Navigation Link](#): 65 S 10th St, San Jose, CA 95112

**Garage maximum height: 6' 8"**. Contact [wie-engineering@sjsu.edu](mailto:wie-engineering@sjsu.edu) if you're arriving in a larger van or bus.

Parking entrance image.



- Take Hwy 280 to 10th/11th St. exit
- Turn on 11th St (oneway heading north)
- Turn left on San Fernando
- Entrance immediately after 10th St. (right side)
- \$5 parking 3rd floor and up

#SVWiE2025

**Recommended parking garage:**

**North Garage (corner of S. 9th St. & E. San Fernando)**

**General Parking is located on Levels 3 and above**

Please purchase a single day virtual parking permit for \$5.00 (effective 3/15/2025) ahead of time or as soon as you park using this link:

<https://www.offstreet.io/location/29ME5OQE>

**\*\*\*\*\* INSTRUCTIONS\*\*\*\*\***

**OFFSTREET INSTRUCTIONS**

1. Click on the guest permit link: <https://www.offstreet.io/location/29ME5OQE>
2. Enter license plate number
3. Choose License Plate State
4. Click Next
5. Enter your full name
6. Click Next
7. Enter payment information
8. Click Pay
9. Enter your email address for confirmation receipt (optional, but recommended)

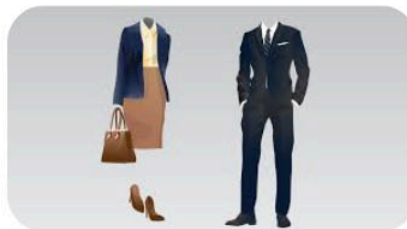


## **DRESS CODE**

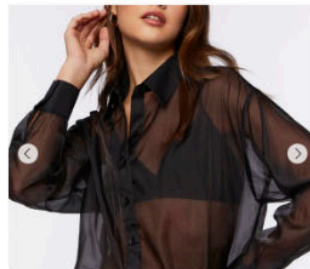
[Return to Table of Contents](#)

### **Recommended Dress Code: What to wear - Professional Appearance**

The SV WiE Conference is a full-day event and your comfort is very important. At the same time, in addition to this being a professional development event, it will also be an opportunity to network with industry professionals. To ensure you make a good impression with industry professionals and professors, the dress code is business formal/business casual. Examples are shown in the diagrams below.



### **What not to wear: No jeans or athletic wear.**

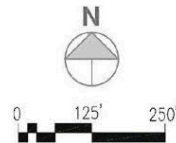


# SJSU CAMPUS MAP

[Return to Table of Contents](#)

## LEGEND

- ▲ Elevator
- 🚗 Park and Ride Shuttle
- ♿ Wheelchair Accessible Electronic Door
- ♿ Wheelchair Accessible Electronic Door Restricted Access (University Housing)
- ▨ Accessible Parking DMV Placard
- ▨ Accessible Parking University Permit
- ▨ 20/30 Minutes Parking



A

B

C

D

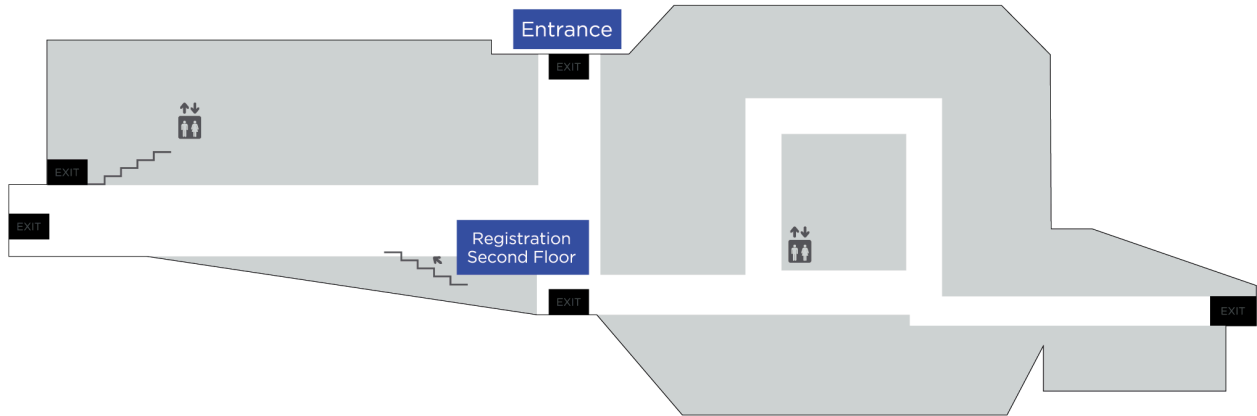




# FACILITY FLOOR MAPS

[Return to Table of Contents](#)

## Student Union 1st Floor



## Student Union 2nd Floor (Meeting Rooms)

